

EVACUATION CHECKLIST

1. Follow all instructions carefully and move quickly.
2. Don't use the telephone unless there is a medical emergency.
3. Take identification such as a Driver's License, State ID card or insurance card.
4. If time permits, pack extra clothing.
5. Before leaving turnoff all electrical appliances and lock your doors and windows. Remember to bring your keys.
6. Take important medications and information:

Name and telephone numbers of your doctor and pharmacy.

A list of all medications and dosages for each family member.



A supply of critical medications including extra needles for diabetics.

All medications that are important for family members.

IMPORTANT REMINDERS

Listen to local radio and television stations for current information.

Follow directions of police and fire crews. Move quickly and carefully.

Don't sightsee!
Stay away from all fire and smoke.

Plan ahead for emergencies.
Prepare your Disaster Supplies Kit, update periodically as needed. Plan for all family members, including pets. Keep telephone numbers near the telephone and a current list of medications nearby.

For more information about chemicals stored in your area and Community Right-To-Know information, contact:

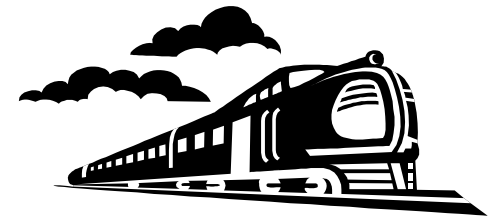
Kootenai County
Local Emergency Planning Committee
(208) 446-1779

BHM
Idaho Bureau of Hazardous Materials
(208) 422-5725

CHEMICAL EMERGENCY



SAFETY TIPS & CHECKLIST



CHEMICAL EMERGENCY!

You'll be hearing a lot more in the months and years ahead about Chemical Emergencies. What is a CHEMICAL EMERGENCY? There are three different kinds of chemical emergencies.

FIRE

When a fire at a manufacturing plant or warehouse occurs, chemicals sometimes burn and are released into the air. In this type of fire, the wind can carry dangerous chemical fumes that are in the smoke over a large area or neighborhood. Breathing the smoke and fumes can make you sick or threaten your life!

TRANSPORTATION INCIDENT

A transportation incident involving a truck or railcar transporting dangerous chemicals can also cause a different kind of CHEMICAL EMERGENCY. If the truck or railcar is damaged, but there is no fire, dangerous chemicals can leak or be thrown from the vehicle. In this type of emergency, an invisible cloud of dangerous fumes and gases can be released into the air and carried by the wind over a wide area or neighborhood. Sometimes this cloud is heavier than air and will travel along the ground.

SPILL

While designed safe, trucks and railcars often carry dangerous chemicals. Transportation incidents involving fire can release toxic fumes into the air. The fumes and smoke can be carried over a wide area.

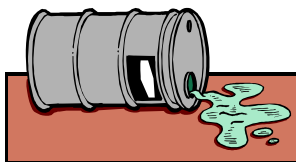
REMINDERS

Follow the directions of fire, police or emergency crews. They know what's happening during a CHEMICAL EMERGENCY and have the best information for directions to a safe area.

Stay away from all fires and smoke! If smoke is coming towards you, move away in another direction. Don't sightsee or try to watch a fire or emergency situation.

If you're near a traffic accident involving a truck which you think might be carrying a dangerous chemical, try to get away from the area.

Listen to the radio or watch television for information when there is a chemical emergency. News reporters will have important information and instructions.



LEAVING YOUR HOME

If a CHEMICAL EMERGENCY involves a large fire with heavy smoke or a cloud of dangerous chemicals, you may be asked to leave your home and go to a safe shelter or to a friend or relative's home. If you are told to evacuate, do so immediately.

Radio or television stations will have special information about public shelters (Red Cross). You may also hear a public address announcement made from a police car driving through your neighborhood.



Sometimes emergency crews will go door-to-door alerting people about the emergency and asking them to leave the area. **ALWAYS LISTEN CAREFULLY TO EMERGENCY INFORMATION AND INSTRUCTIONS!**

PETS

If you are leaving your home and going to a friend or relative's home, take your pet. Please be advised that pets are not allowed at public shelters (Red Cross).

SHELTER IN PLACE

During a CHEMICAL EMERGENCY, it may be necessary to stay inside your home, office or school. The following precautions are recommended:

Close all doors, windows, and fireplace dampers.

Turn off all air conditioners, fans, and electrical appliances.

Keep extra towels or sheets nearby to block crack under doors or windows.

Turn on a radio or television for information.

Don't use the telephone unless there is a medical emergency.