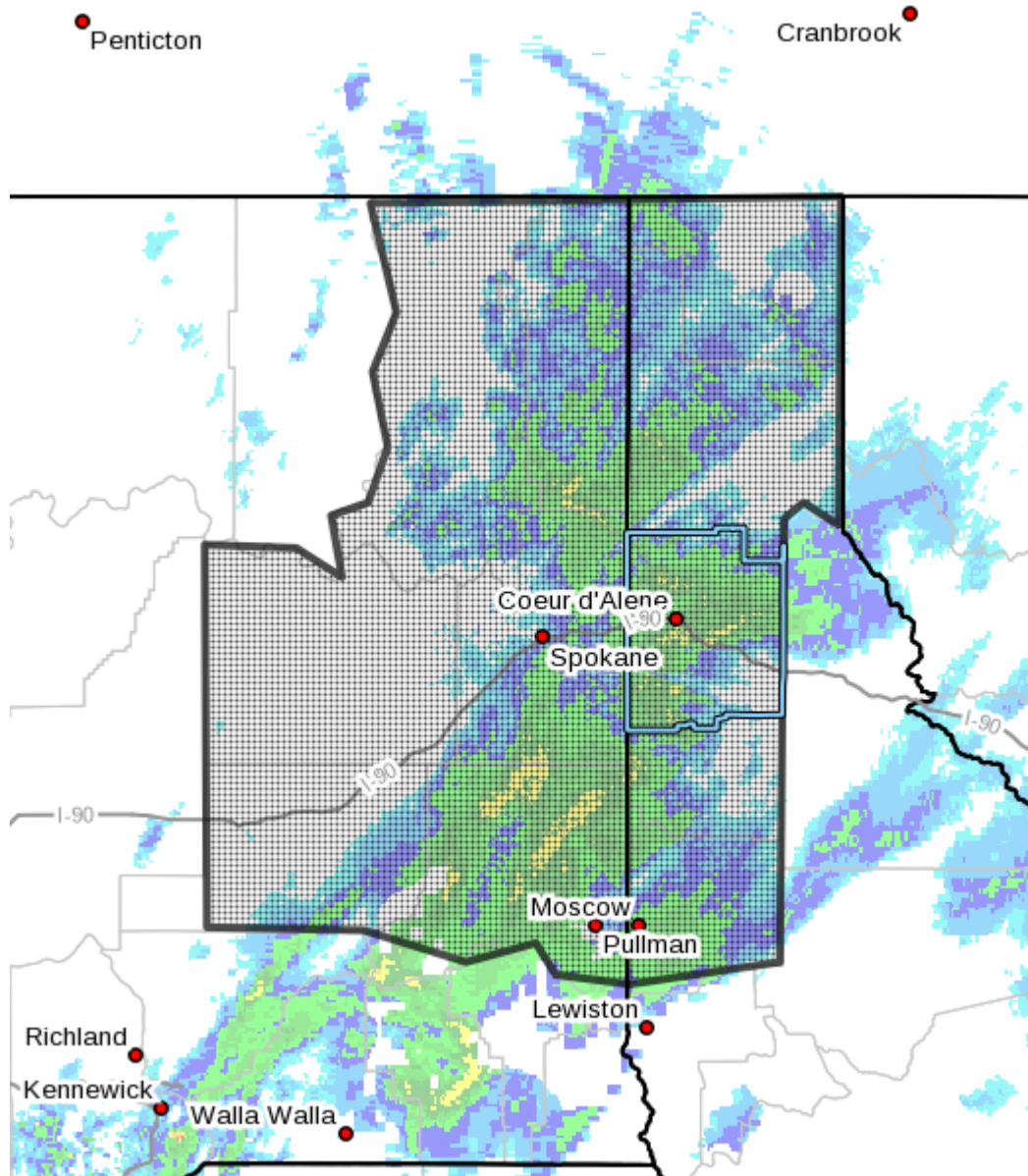


BULLETIN - IMMEDIATE BROADCAST REQUESTED

Flood Warning

National Weather Service Spokane WA

955 AM PST THU FEB 16 2017



The National Weather Service in Spokane has issued a *** Flood Warning for Rain and Snowmelt in...**
Latah County in the Panhandle of Idaho...
Bonner County in the Panhandle of Idaho...
Boundary County in the Panhandle of Idaho...
Benewah County in the Panhandle of Idaho...
Kootenai County in the Panhandle of Idaho...
Northeastern Douglas County in northeastern Washington...
Adams County in north central Washington...

Whitman County in eastern Washington...
Lincoln County in eastern Washington...
Stevens County in northeastern Washington...
Spokane County in northeastern Washington...
Pend Oreille County in northeastern Washington...

* Until 1000 PM PST Thursday

* At 935 AM PST, local law enforcement officials are reporting numerous flood problems across Eastern Washington and Northern Idaho from the combination of heavy rain, snow melt, and clogged culverts. Several roads are experiencing some degree of flooding and motorists are urged to use caution when they see water over the road. Flooding problems are expected to continue through the day as additional light rain falls and combine with delayed runoff from overnight rains and melting snow.

Between one and one and a half inches of rain fell across the warned area overnight. An additional quarter inch of rain will be possible through this evening however mild temperatures and breezy winds will continue to melt snow contributing to runoff.

PRECAUTIONARY/PREPAREDNESS ACTIONS...

Please report flooding to your local law enforcement agency, and to the Kootenai County Office of Emergency Management at (208) 446-1775 or oem@kcgov.us.