

## Introduction

The Kootenai County Board of Commissioners has initiated an update to the Coeur d'Alene Master Plan (Plan) to document the development of the Coeur d'Alene Airport (COE or "the Airport"). The Plan serves as a roadmap for bringing projects, people, and funding together in a coordinated manner, and provides strategic direction regarding the Airport's 20-year capital development plan and investment of resources.



The Plan is conducted in accordance with Federal Aviation Administration (FAA) guidance, as prescribed by grand assurances and mandated by regulatory standards. Conformance with FAA standards enables Kootenai County to apply for federal and state funding to support the maintenance, expansion, and upgrade of airport facilities.

The consulting team assisting the Airport with this effort is led by Mead & Hunt, in association with T-O Engineers, Verdis, Maul Foster & Alongi, and GeoTera. The Plan will update the 2012 COE Master Plan to address key issues facing the Airport and the surrounding communities.

### Airport Background

The Coeur d'Alene Airport is in Kootenai County, Idaho, seven miles northwest of downtown Coeur d'Alene. Nearby municipalities include the cities of Coeur d'Alene, Post Falls, Rathdrum, Hayden Lake, and Dalton Gardens. The Airport, built in 1942, is publicly-owned and operated by Kootenai County. The Airport hosts flight training, business aviation, recreational pilots, emergency response, and U.S. Forest Service aerial firefighting activities.

COE features two runways and instrument landing systems, which keep the Airport open during periods of low visibility. A system of taxiways connects the runways to aircraft parking and storage facilities. There are currently two privately-run businesses providing fueling services, as well as multiple maintenance shops on the Airport property. Airport staff are employed by Kootenai County.



The Airport plays a vital role in the County by supporting emergency response, firefighting, and law enforcement aviation uses. It is a vibrant hub of general aviation users, including corporate jets, propeller aircraft, and helicopters. COE is an economic catalyst for Kootenai County. The 2008 Idaho Airport System Plan found that the Airport generated over 1,000 jobs and \$130 Million in economic impact per year. The State of Idaho is in the process of updating the economic impact numbers for airports statewide and a revised figure is expected to be released in 2018.

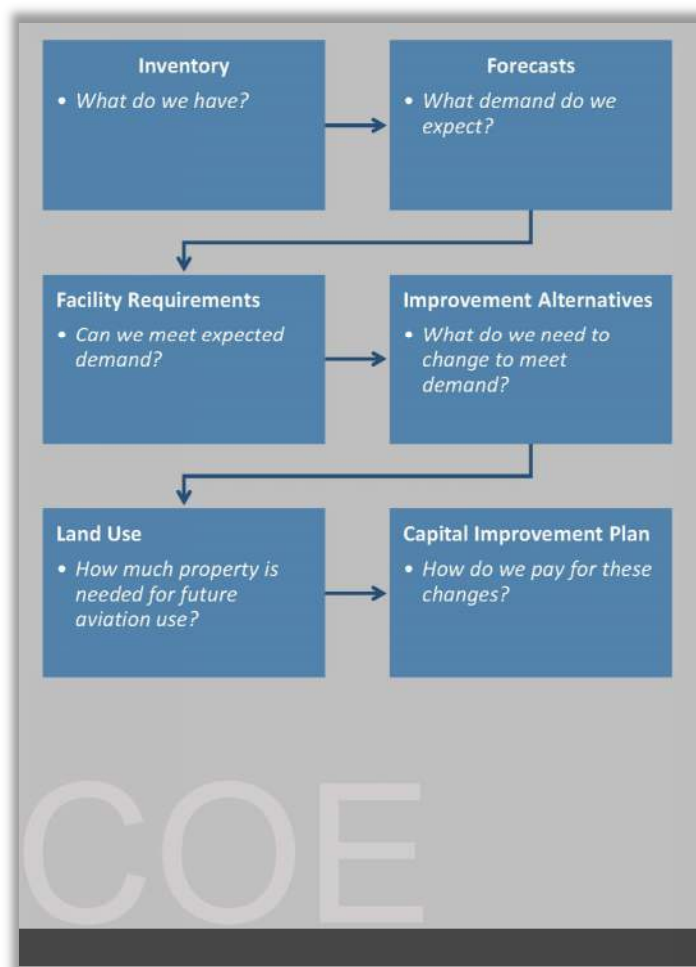
### Study Introduction

The Airport Master Plan is primarily a facilities plan, with the purpose of documenting the development of the Airport's infrastructure in response to future demand. The updated plan will focus on the future airfield layout, which will help plan development in surrounding areas. This update will result in the 20-year development strategy, complimentary with community interests. The Plan is primarily funded by a Federal Aviation Administration (FAA) Airport Improvement Program grant, with support from the Idaho Transportation Department and Kootenai County.

### Plan Focus Areas

This Plan will focus on the future airfield layout so that the Airport's neighbors can plan for land development in the surrounding areas. Plan focus areas include the following:

- ▶ Aircraft operations counts
- ▶ Disposition of runways 6/24 and 2/20
- ▶ Roadway development
- ▶ Airfield Taxiway Layout
- ▶ Development north of runway 6/24
- ▶ Airport office and storage Requirements
- ▶ Street access and automobile wayfinding
- ▶ Land use compatibility and noise



## Plan Documentation

The Master Plan will be organized into six chapters and an Airport Layout Plan. The purpose of each chapter is explained at right.

- I. Introduction
1. Inventory
2. Aviation Activity Forecasts
3. Facility Requirements
4. Improvement Alternatives
5. Airport Land Use
6. Capital Improvement Plan
7. Airport Layout Plan

## Stakeholder Coordination

The Master Plan is intended to be responsive to airport and community needs. Stakeholder coordination will occur throughout the development of the Master Plan, and provide the community with the opportunity to provide input throughout the process and interact with Airport management and consultant staff.

## Community Involvement

The community involvement process is designed to provide stakeholders and communities with the opportunity to share information and engage with the Master Plan process, learn about issues under consideration, and provide feedback. Four community outreach meetings will occur as part of the Master Plan. The Master Plan chapters and stakeholder meeting materials will be posted to the Airport website. Comments will be reviewed by the consultant and Airport management, and addressed or incorporated into the Plan.

## Airport Stakeholders and Advisory Committees

There are two advisory committees assembled to provide input on Plan materials, described below. Some members will serve on both committees.

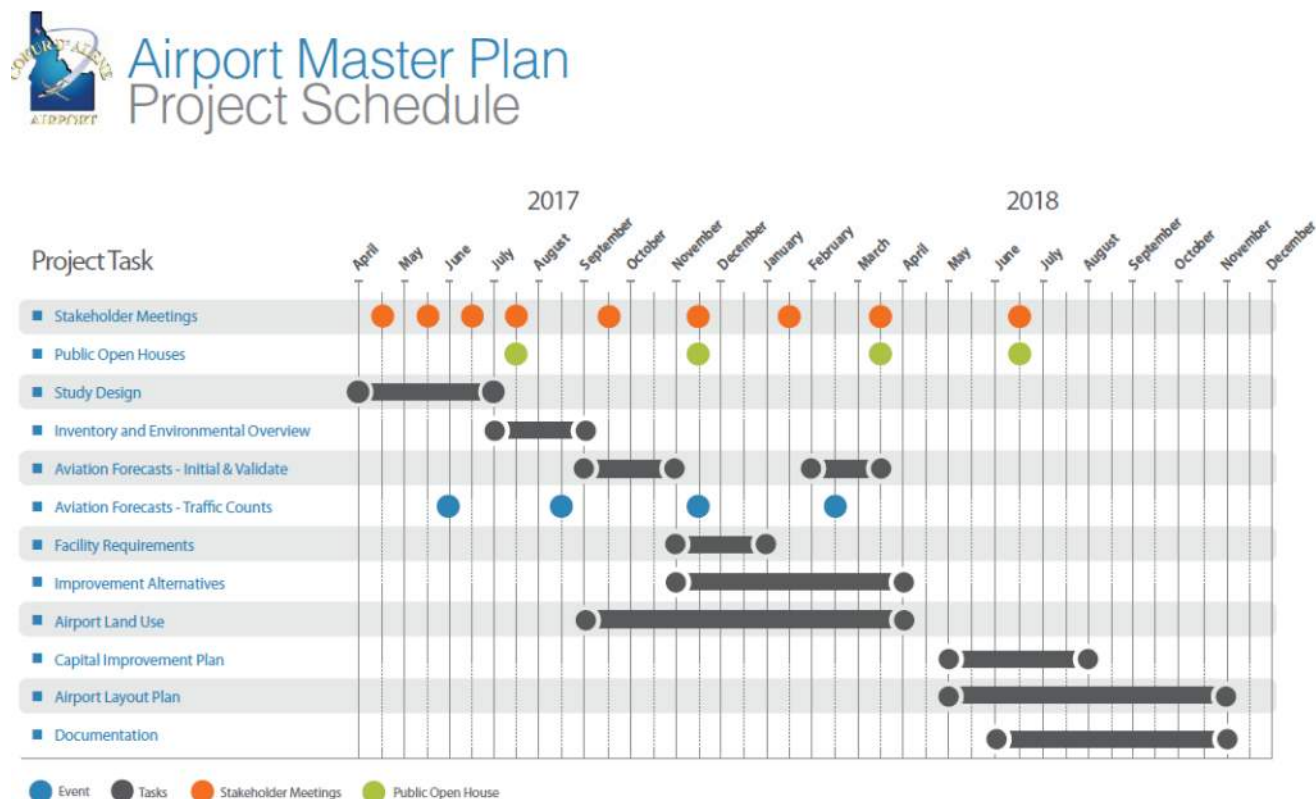
- ▶ Community Advisory Committee (CAC)
  - The CAC is made up of community stakeholders, including airport tenants, land use planning bodies, and economic development agencies. CAC members are tasked with reviewing Master Plan materials and providing comment from the perspective of the organizations of which they are a member of.



- ▶ Technical Steering Committee (TSC)
  - The TSC is made up of Airport staff, members of the Airport Advisory Board, and others with an in-depth understanding of aviation. TSC members are tasked with becoming familiar with how the Airport operates and what facilities pilots and aviation-related businesses require.

Further coordination will occur with the Federal Aviation Administration’s Helena Airports District Office and the Idaho Transportation Department’s Division of Aeronautics. These agencies are financial sponsors of the Plan and some of the subsequent improvement projects that will be recommended.

Stakeholder meetings will occur throughout the development of the Master Plan so that opportunity to comment on proposed airport development is available before final decisions have been made. This will result in the development of a Master Plan that responds to community interests. The Master Plan schedule is shown on the following page.



The project schedule is subject to revision as the project progresses. Future meeting dates are estimates.